

MULAN GALLERY

19 Tanglin Road. #02-33 Tanglin Shopping Centre. Singapore 247909

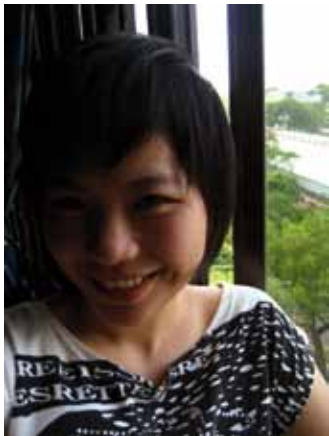
Tel: (65) 6738 0810 | E: enquiry@mulangallery.com.sg



MASQUERADE

24 April – 22 May 2010

www.mulangallery.com.sg



Handling photographs with delicate, calculated care, rendering them on canvas with layered nuances of colour, tonality, Shiew Eng produces some arresting portraits of pre-pubescent children. The ambiguous looks of children taken from candid photographs and painted with a garish light as though on large posters, are vaguely unsettling to look at and compel our contemplation. These paintings speak eloquently about our culture of passive seeing, the compulsions inscribed by gender and the more insidious perversions that exist. Shiew Eng's 'Masquerade' is a meditated and thoughtful exercise and yet is at the same time filled with a quality of visual sensuality that promises delightful encounters for seers.

Education

- 2008 - 2009 BA (Hon) in Fine Art: Drawing and Painting
University of Huddersfield, U.K./ Nanyang Academy of Fine Arts, Singapore
- 2006 - 2008 Diploma in Fine Art: Western Painting, Nanyang Academy of Fine Arts, Singapore
- 2003 - 2004 NCEA Level 3, Newlands College, New Zealand

Selected Group Exhibitions

- 2009 **The degree show: The Elephant In The Room**
Nanyang Academy of Fine Arts, Lim Hak Tai Gallery, Singapore
- No Comment – Works-In-Progress**
Sculpture Square, Singapore
- Too Far Edna We Wander Afoot**
Wilkie Edge, Singapore
- 2008 **Asian Students and Young Artists Art Festival 2008**
Seoul Station Old Building, Seoul, Korea
- Out of Our Imagination**, Diploma Graduation Show 2008,
Skylight Painting Studio, Nanyang Academy of Fine Arts, Singapore
- 2006 **NAFA Fine Art Awards and Exhibition 2006**
Nanyang Academy of Fine Arts, Galleries 1 and 2, Singapore

Awards

- 2006-2008 Tuition Grant, Ministry Of Education, Singapore
- 2006 Category Winner, NAFA Fine Art Awards and Exhibition 2006
Nanyang Academy of Fine Arts, Singapore
- 2004 Distinction Award, Personal Excellence in Art, Newlands College, Wellington, New Zealand
- 2003 Distinction Award, Personal Excellence in Art, Newlands College, Wellington, New Zealand

Selected Activities

- 2008 Chair Person – Graduation Show Committee, Nanyang Academy of Fine Arts, Singapore
Student Ambassador – Nanyang Academy of Fine Arts, Singapore
- 2007 NAFA School Educational Trip to Venice Biennale,
Venice, Italy and Documenta 12, Kassel, Germany

Selected Media Coverage

- 2008 18 MAR 2008, NEWS, The New Paper, Singapore
16 FEB 2008, SPECIAL REPORT, The Straits Times, Singapore
- 2006 30 NOV 2006, UPFRONT, The Straits Times, Singapore

Collections Various private collections: Singapore, Korea and U.S.A.



Neon VI,
90 x 120cm, Oil on Canvas



Neon VII,
90 x 120cm, Oil on Canvas



Neon VIII,
90 x 120cm, Oil on Canvas



Neon X,
150 x 150cm, Oil on Canvas



Neon IX,
120 x 150cm, Oil on Canvas



Neon XI,
120 x 150cm, Oil on Canvas